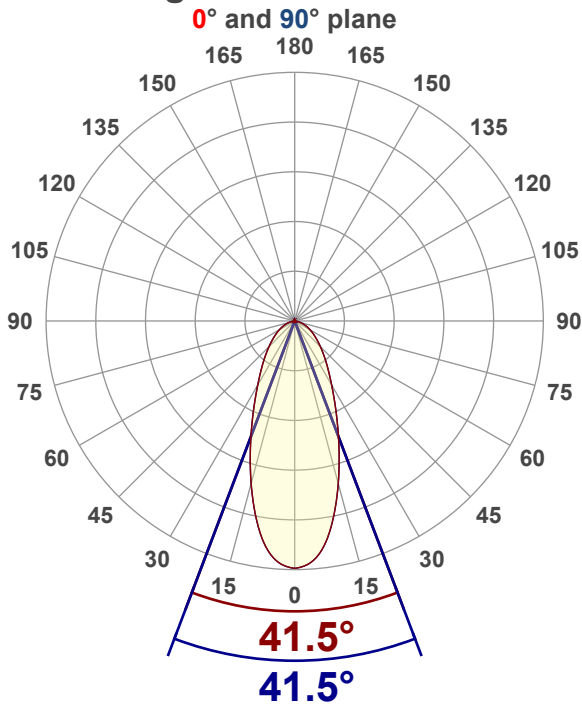


Light efficiency:**115 Lumen/Watt****Color temperature:****5040 K****Light quality:****CRI:93.6, R_g:91.5, R_f:99.5****P: 2 / V: - / F: 2****Output: 1045 lm****Peak: 1179 cd****Power: 9.1 W****Voltage: 121 V****Current: 0.077 A****PF: 0.97****THD: 10.87 %****Angular Distribution****Product name:****SCP4-9W-CCT-WH - 5000K****Test Date:****12/2/2025****Beam Angle (50% of the brightness of the centre):****41.5°****Field Angle (10% of the brightness of the centre):****106.7°****Cut Off Angle (2.5% of the brightness of the centre):****148.7°****Beam Details****measured at centre of beam*

Mounting Height (feet)\(meter)	Lux*	Footcandles*	Beam width (feet) / (meter)
4 ft / 1.2 m	793 lx	74 fc	3 ft / 0.9 m
8 ft / 2.4 m	198 lx	18 fc	6.1 ft / 1.8 m
12 ft / 3.7 m	88 lx	8 fc	9.1 ft / 2.8 m
16 ft / 4.9 m	50 lx	5 fc	12.1 ft / 3.7 m
20 ft / 6.1 m	32 lx	3 fc	15.1 ft / 4.6 m

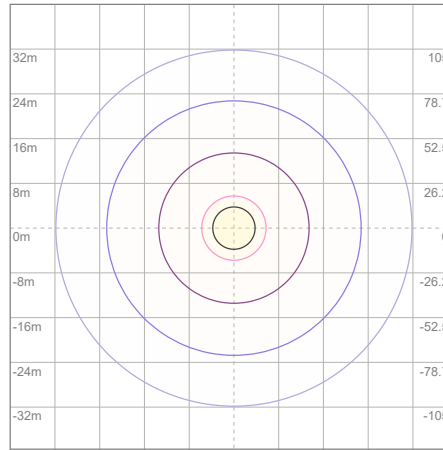
Beam center

Photometric Testing Report

Zonal Lumen Summary

Zone	Lumen	%Luminaire
0-30	540	51.67%
0-40	713	68.23%
0-60	946	90.53%
60-90	98.9	9.46%
70-100	35.5	3.40%
90-120	0.095	0.01%
0-90	1044	99.90%
90-180	0.457	0.04%
0-180	1045	100.00%

ISO Lux Diagram



Lux at center:	127 lx
3%	3.81 lx
5%	6.35 lx
10%	12.70 lx
30%	38.10 lx
50%	63.50 lx

Conditions:

Number of planes: 8
Lux distribution on a surface when lamp is mounted at 3.05 meters from the surface.

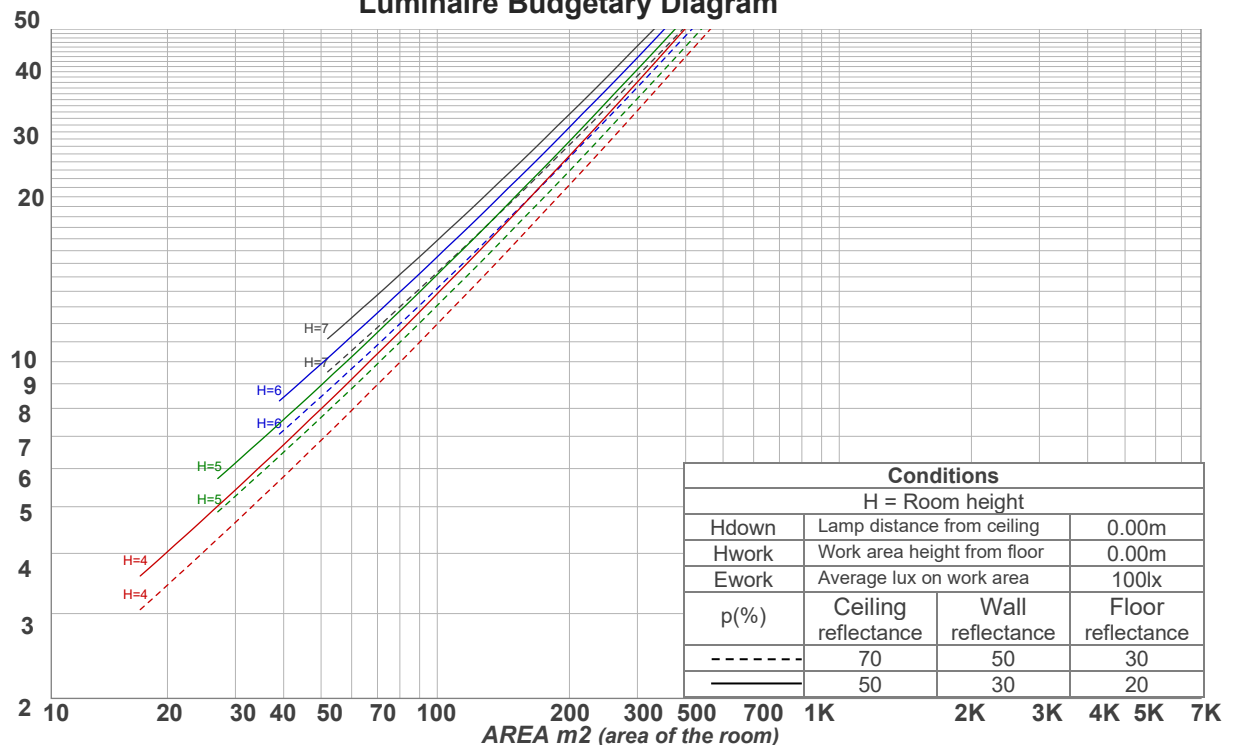
Mounting height: 3.05 meters (10 feet)

Coefficients of Utilization

Ceiling reflectance	80				70				50			30			10			0
Wall reflectance	70	50	30	10	70	50	30	10	50	30	10	50	30	10	50	30	10	0
Floor reflectance	20	20	20	20	20	20	20	20	20	20	20	20	20	20	20	20	20	0
RCR	(RCR: Room Cavity Ratio)				Room Values are expressed as percentage of Lumens delivered to the task surface													
0	119	119	119	119	116	116	116	116	111	111	111	106	106	106	102	102	102	100
1	112	108	105	102	109	106	103	100	102	99	97	98	96	94	94	93	91	89
2	104	98	92	88	102	96	91	87	93	89	85	89	86	83	87	84	81	80
3	97	89	83	78	95	87	82	77	85	80	76	82	78	74	80	76	73	71
4	91	81	74	69	89	80	74	69	78	72	68	76	71	67	74	70	66	64
5	85	75	68	62	83	74	67	62	72	66	62	70	65	61	69	64	60	59
6	80	69	62	57	79	69	62	57	67	61	56	65	60	56	64	59	55	54
7	76	65	57	52	74	64	57	52	62	56	52	61	56	52	60	55	51	50
8	72	60	53	48	70	60	53	48	58	52	48	57	52	48	56	51	48	46
9	68	57	50	45	67	56	49	45	55	49	45	54	49	45	53	48	44	43
10	64	53	47	42	63	53	46	42	52	46	42	51	46	42	50	45	42	40

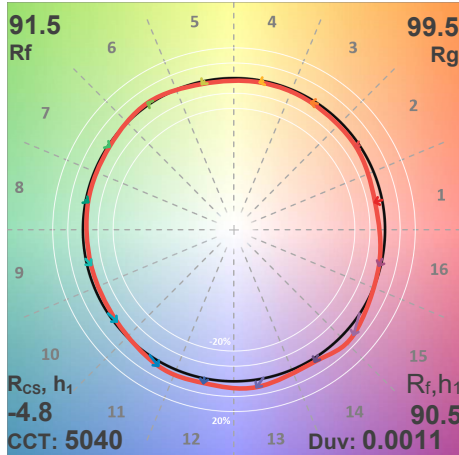
LAMPS (number of lamps)

Luminaire Budgetary Diagram

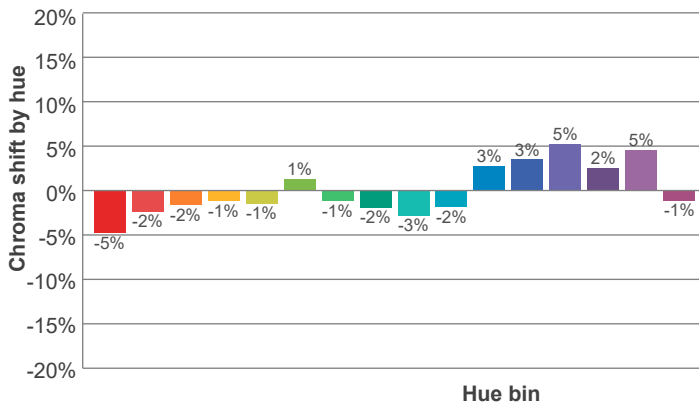
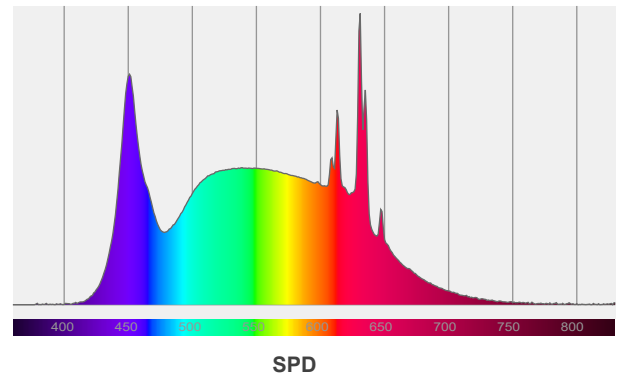
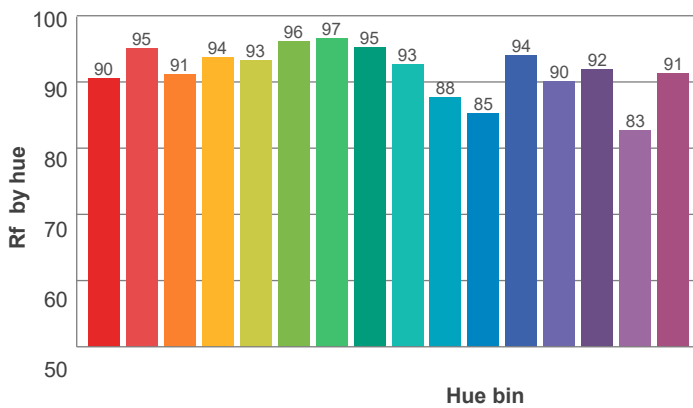
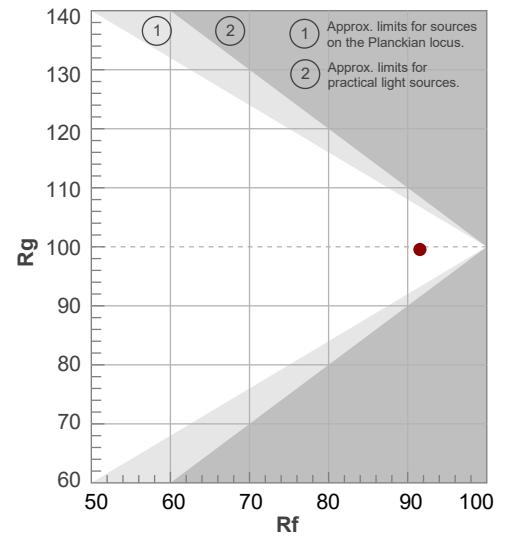


ANSI/IES TM-30-18

P: 2 / V: - / F: 2



Hue Bin	R _f	Shifts (%)	
		Chroma	Hue
1	90	-5%	0%
2	95	-2%	1%
3	91	-2%	4%
4	94	-1%	2%
5	93	-1%	2%
6	96	1%	1%
7	97	-1%	0%
8	95	-2%	1%
9	93	-3%	5%
10	88	-2%	7%
11	85	3%	8%
12	94	3%	0%
13	90	5%	-6%
14	92	2%	-4%
15	83	5%	-14%
16	91	-1%	-5%



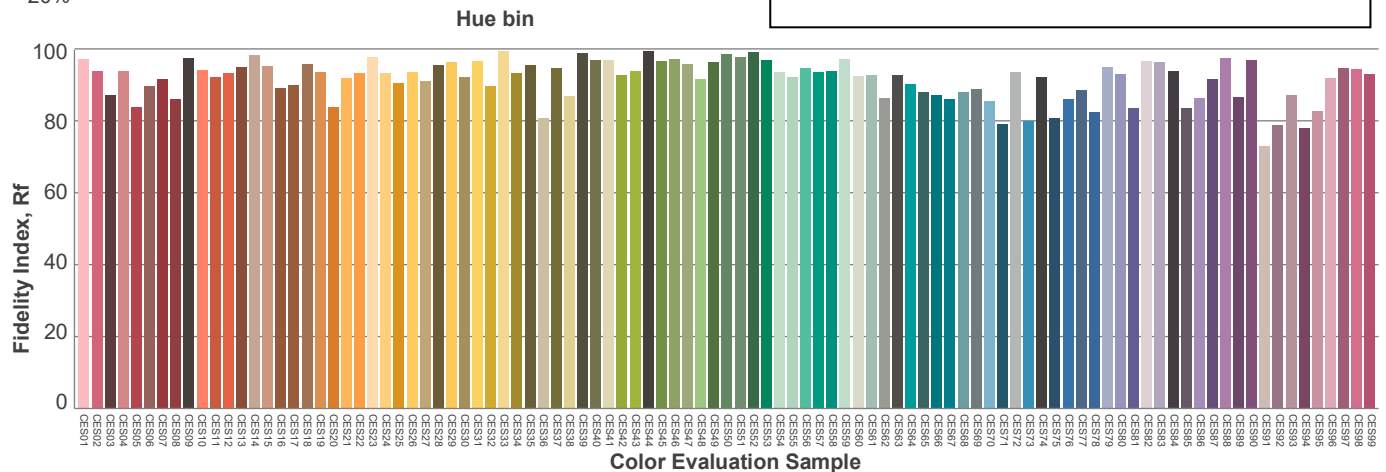
Red: 19.6%, Power=2.8mW

Blue: 17.8%, Power=10.2mW

Green: 33.4%, Power=15.2mW

UVA: 0%, Power=0.0mW

Dominant Wavelength: 577nm

1st Peak Wavelength: 631nm2nd Peak Wavelength: 451nm

Glare Evaluation According to UGR

p Ceiling		70	70	50	50	30	70	70	50	50	30
p Walls		50	30	50	30	30	50	30	50	30	30
p Floor		20	20	20	20	20	20	20	20	20	20
Room size X Y		Viewing direction at right angles to lamp axis					Viewing direction parallel to lamp axis				
2H	2H	26.4	27.3	26.6	27.6	27.8	26.4	27.3	26.6	27.6	27.8
	3H	27.3	28.2	27.7	28.5	28.7	27.3	28.2	27.7	28.5	28.7
	4H	27.6	28.5	28.0	28.8	29.0	27.6	28.5	28.0	28.8	29.0
	6H	27.8	28.6	28.1	28.9	29.3	27.8	28.6	28.1	28.9	29.3
	8H	27.8	28.6	28.2	28.9	29.3	27.8	28.6	28.2	28.9	29.3
	12H	27.8	28.6	28.2	28.9	29.4	27.8	28.6	28.2	28.9	29.4
4H	2H	26.8	27.7	27.2	27.9	28.2	26.8	27.7	27.2	27.9	28.2
	3H	27.9	28.7	28.3	29.0	29.5	27.9	28.7	28.3	29.0	29.5
	4H	28.3	29.0	28.7	29.4	29.9	28.3	29.0	28.7	29.4	29.9
	6H	28.5	29.2	29.0	29.5	29.9	28.5	29.2	29.0	29.5	29.9
	8H	28.6	29.2	29.1	29.5	29.9	28.6	29.2	29.1	29.5	29.9
	12H	28.6	29.1	29.1	29.5	30.0	28.6	29.1	29.1	29.5	30.0
8H	4H	28.4	29.0	28.9	29.4	29.8	28.4	29.0	28.9	29.4	29.8
	6H	28.7	29.2	29.2	29.6	30.2	28.7	29.2	29.2	29.6	30.2
	8H	28.9	29.2	29.4	29.8	30.4	28.9	29.2	29.4	29.8	30.4
	12H	28.9	29.2	29.5	29.7	30.3	28.9	29.2	29.5	29.7	30.3
12H	4H	28.4	28.9	28.9	29.3	29.8	28.4	28.9	28.9	29.3	29.8
	6H	28.8	29.2	29.3	29.7	30.3	28.8	29.2	29.3	29.7	30.3
	8H	28.9	29.2	29.4	29.7	30.3	28.9	29.2	29.4	29.7	30.3
Variation of the observer position for the luminaire distance S											
S = 1.0H		0.2 / -0.3					0.2 / -0.3				
S = 1.5H		0.5 / -0.7					0.5 / -0.7				
S = 2.0H		1.0 / -1.2					1.0 / -1.2				
Standard table		n/a					n/a				
Correction summand		n/a					n/a				
Corrected glare indices referring to 1045 lm total luminous flux											

Due to our continued efforts to improve our products, product specifications are subject to change without notice. Please refer to our website for the latest test results.